

## Single Pole

½" Automatic, Manual Reset & One Shot

## Snap Action Bimetallic Disc

Thermal Cutouts / Temperature Switch

MIKRON



L20A-PCB



L20A-PCB



L20D-PCB



L30A-PCB-1



L30A-PCB-1



L20D/L21D



L20A/L21A



L30F



L30F



L20/L21



L30A



L20/L21



L30A



L20C/L21C



L20C/L21C

## Features

- Snap Action Switch ensures Chatter Free Operation.
- Automatic Reset available with both normally open and normally closed contact.
- Manual Reset – Manually resettable device.
- One Shot – Single operation device.
- Switching System is current insensitive and reacts to external thermal load only.
- Rated at 6, 10 & 16A.
- Operating temperature 40°C to 190°C ( at an interval of 10°C)
- Double Break System ensures high switching performance and long service life.
- PPS housing provides, High temperature capability, High Impact strength, Low Static Generation.
- Imported Bimetal Disc for better and reliable operation and tamper proof settings.

## Applications

- Temperature Controller or over heat Protector for use wherever the temperature of metal surface is to be controlled.
- Overheat Projectors.
- Instant & Storage Water Geysers, Boilers.
- Induction Heating Equipments.
- UPS, Invertors, SMPS, Battery Chargers, Thyrestors, Heat Sinks.
- Flame Proof Equipment & Fire Alarms.
- Domestic Electric Appliances.
- Protects the equipment against overheat by switching of the power supply.

## Special Instructions

- Preferably use heat sink compound on sensing surface before mounting thermal cutouts.
- Manual Reset thermal cutouts can be reset only after substantial drop of temperature.
- Use Push On Terminals Only.
- Do not solder the terminals as soldering may cause damage resulting in malfunction of the device & the guarantee will lapse.

**TYPE:** L20/L21/L25/L26/L30  
(10A–250V AC)

**TYPE:** L120/L121/L125/L126/L130  
(16A–250V AC)

**L20/L25/L120/L125:** NORMALLY CLOSED  
AUTOMATIC RESET

**L21/L26/L121/L126:** NORMALLY OPEN  
AUTOMATIC RESET

**L30/L130:** NORMALLY CLOSED  
MANUAL RESET

**TEMP. RANGE:** 40 TO 130°C FOR L20,  
L21, L30, L120, L121,  
L130 140 TO 190°C for  
L25, L26, L125, L126  
(IN 10°C INCREMENTS)

**TOLERANCE:** ±6°C BUT ATLEAST ±7K

**DIFFERENTIAL  
MOUNTING:**

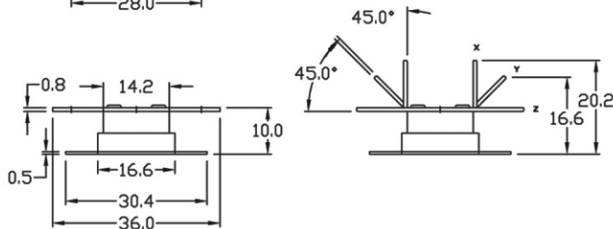
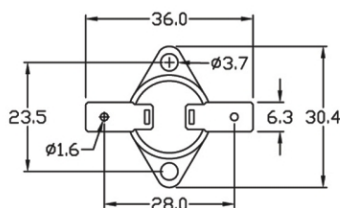
5 TO 50°C

#### MOUNTING

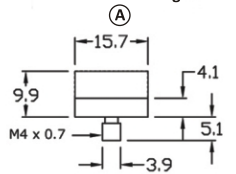
**NO LETTER** - STD. MOUNTING ROTATING 360°

- A** - ROUND STUD MOUNTING - M4
- B** - HEX STUD MOUNTING - M6
- C** - RAISED MOUNTING
- D** - HEX STUD MOUNTING - M4
- E** - ROUND STUD MOUNTING - M5
- F** - SPOTWELD CAP

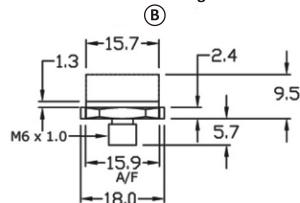
#### L20/L21/L25/L26 L120/L121/L125/L126



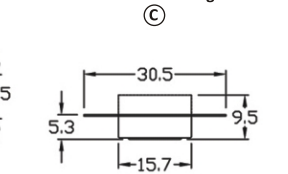
Round Stud Mounting - M4



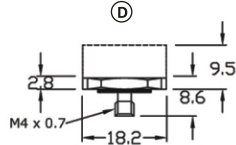
Hex Stud Mounting - M6



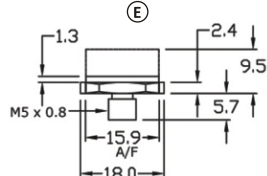
Raised Mounting



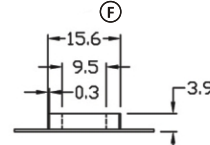
Hex Stud Mounting - M4



ROUND STUD MOUNTING - M5



SPOTWELD CAP



[ Dimensions in mm are for reference only ]

#### OPERATING INFORMATION

L20 / L21 / L25 / L26 / L30 / L120 / L121 / L125 / L126 / L130

**L20 :** TYPE NO  
L20/L25/L120/L125-NORMALLY CLOSED ( AUTO RESET )  
L21/L26/L121/L126 – NORMALLY OPEN ( AUTO RESET )  
L30 / L130 – NORMALLY CLOSED ( MANUAL RESET )

**A** TYPE OF MOUNTING  
NO LETTER – STANDARD MOUNTING  
A – BRASS ROUND STUD MOUNTING - M4  
B – BRASS HEX STUD MOUNTING - M6  
C – BRASS HEX STUD MOUNTING - M5  
D – BRASS HEX STUD MOUNTING - M4  
E – ROUND STUD MOUNTING - M5  
F – SPOTWELD CAP

**80** OPERATING TEMPERATURE  
80-80°C

**Z** ANGLE OF TERMINALS  
X – 90°, Y – 45°, Z – 180°

# ELMECH INDUSTRIES

32, Madhuban Industrial Estate, Mahakali Caves Road, Andheri ( East ), Mumbai – 400 093.

Phone: 91-22-35230899 • Mobile: 91-8850513715 • E-mail : info@elmi.in • website : www.elmi.in